

# HANECO LED DOWNLIGHT INSTALLATION GUIDE

## VIVA<sup>145</sup>

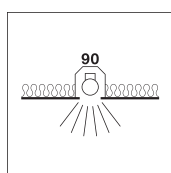
Thanks for choosing our **VIVA<sup>145</sup>** Downlight products.  
We strongly recommend that you read this manual carefully before installation.

### **WARNING**

- Installation must be carried out by a licenced electrician and in accordance with these instructions and relevant Australian standards and local regulations.
- Do not install any luminaire near any heat source.
- Before the installation make sure you have turned OFF the electricity supply.
- Ensure the product is connected to a 220-240V AC 50/60Hz power supply.
- If the external flexible cable or cord of this luminaire is damaged, it shall be exclusively replaced by the manufacturer or by a service agent or licenced electrician in order to avoid hazard.
- Non-user replaceable light source.
- The lens cover of the luminaire is secured by glue, unremovable.
- The warranty is void if product is not installed according to the instructions.
- Risk of overheating of fire if the clearance distances are compromised.

### Clearance Guide

This range of Haneco LED downlight requires a minimum clearance around the luminaire. Thermal insulation and flammable building structural members are to be at a minimum distance set out by the table and diagram below.

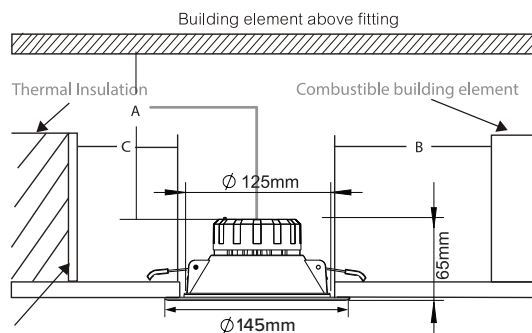


**CA 90**

#### Fixed guard required where:

- Insulation materials are not secured in position
- Loose materials are present

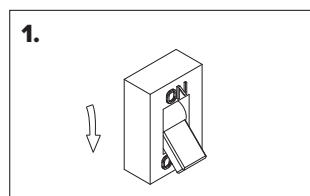
INFO & WARNING	
A - Clearance above luminaire	150mm
B - Side clearance to combustible building element	100mm
C - Side clearance to bulk thermal insulation	100mm



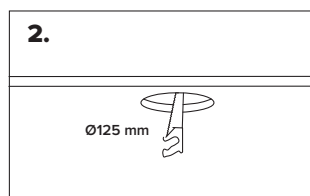
### Product Specifications

Product Code	Input	Cutout	CRI	Dimming Method	IC Rating	IP Rating	Operating Temp	Maxi Ceiling Thickness
VIVA145-TRI	220- 240Vac, 50/60Hz	Ø125mm	>80	Phase-cut dimmable	CA 90	IP44 Front	-20°C - 45°C	15mm

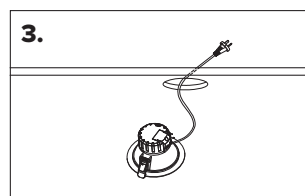
### Installation Instructions



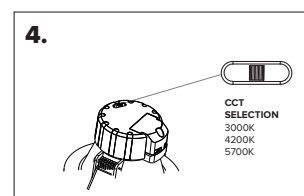
Switch OFF the power.



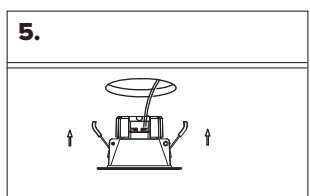
Cut an appropriately sized hole in the ceiling that suits your needs.



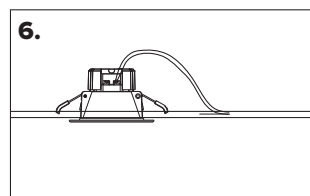
Insert cables through the cut-out into the ceiling cavity and plug into a pre-wired socket outlet inside the ceiling.



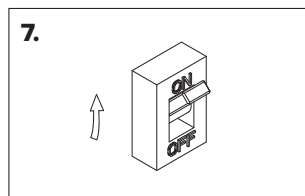
Select the desired CCT using the switch and attach the fascia trim/ trim adapter (optional) with your preferred colour finish.



Fold mounting clips up to the sides of the luminaire and insert luminaire through the cut-out.



Installing the luminaire in the ceiling.



Switch ON power.

Version Updated on:  
**10/04/2025**